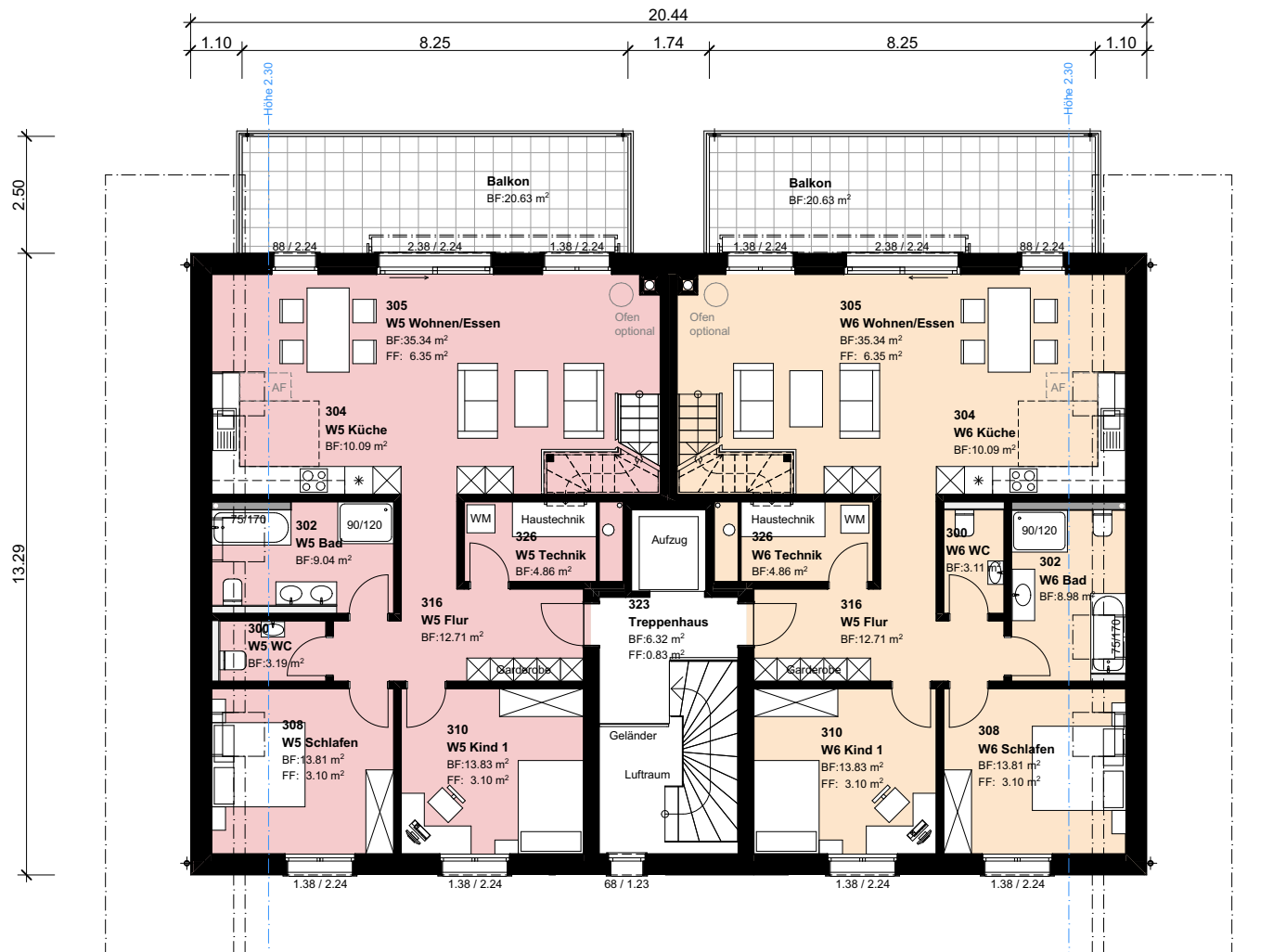


Vermietung A/B Dachgeschoss

Datum 22.04.2022
Mst. 1:150

überbauung
hubelmatte

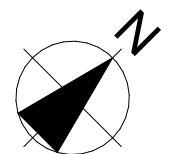


Wohnung A3L 5
HNF $102.65 + 30.89 \text{ m}^2 = 133.56 \text{ m}^2$
Bruttofläche $123.96 \text{ m}^2 + 35.62 \text{ m}^2 = 159.58 \text{ m}^2$

Wohnung B3L 11
HNF $102.65 + 30.89 \text{ m}^2 = 133.56 \text{ m}^2$
Bruttofläche $123.96 \text{ m}^2 + 35.62 \text{ m}^2 = 159.58 \text{ m}^2$

Wohnung A3R 6
HNF $102.65 + 30.89 \text{ m}^2 = 133.56 \text{ m}^2$
Bruttofläche $123.96 \text{ m}^2 + 35.62 \text{ m}^2 = 159.58 \text{ m}^2$

Wohnung B3R 12
HNF $102.65 + 30.89 \text{ m}^2 = 133.56 \text{ m}^2$
Bruttofläche $123.96 \text{ m}^2 + 35.62 \text{ m}^2 = 159.58 \text{ m}^2$





Wohnung A3L 5
 HNF $102.67 + 30.89 \text{ m}^2 = 133.56 \text{ m}^2$
 Bruttofläche $123.96 \text{ m}^2 + 35.62 \text{ m}^2 = 159.58 \text{ m}^2$

Wohnung B3L 11
 HNF $102.67 + 30.89 \text{ m}^2 = 133.56 \text{ m}^2$
 Bruttofläche $123.96 \text{ m}^2 + 35.62 \text{ m}^2 = 159.58 \text{ m}^2$

Wohnung A3R 6
 HNF $102.67 + 30.89 \text{ m}^2 = 133.56 \text{ m}^2$
 Bruttofläche $123.96 \text{ m}^2 + 35.62 \text{ m}^2 = 159.58 \text{ m}^2$

Wohnung B3R 12
 HNF $102.67 + 30.89 \text{ m}^2 = 133.56 \text{ m}^2$
 Bruttofläche $123.96 \text{ m}^2 + 35.62 \text{ m}^2 = 159.58 \text{ m}^2$

